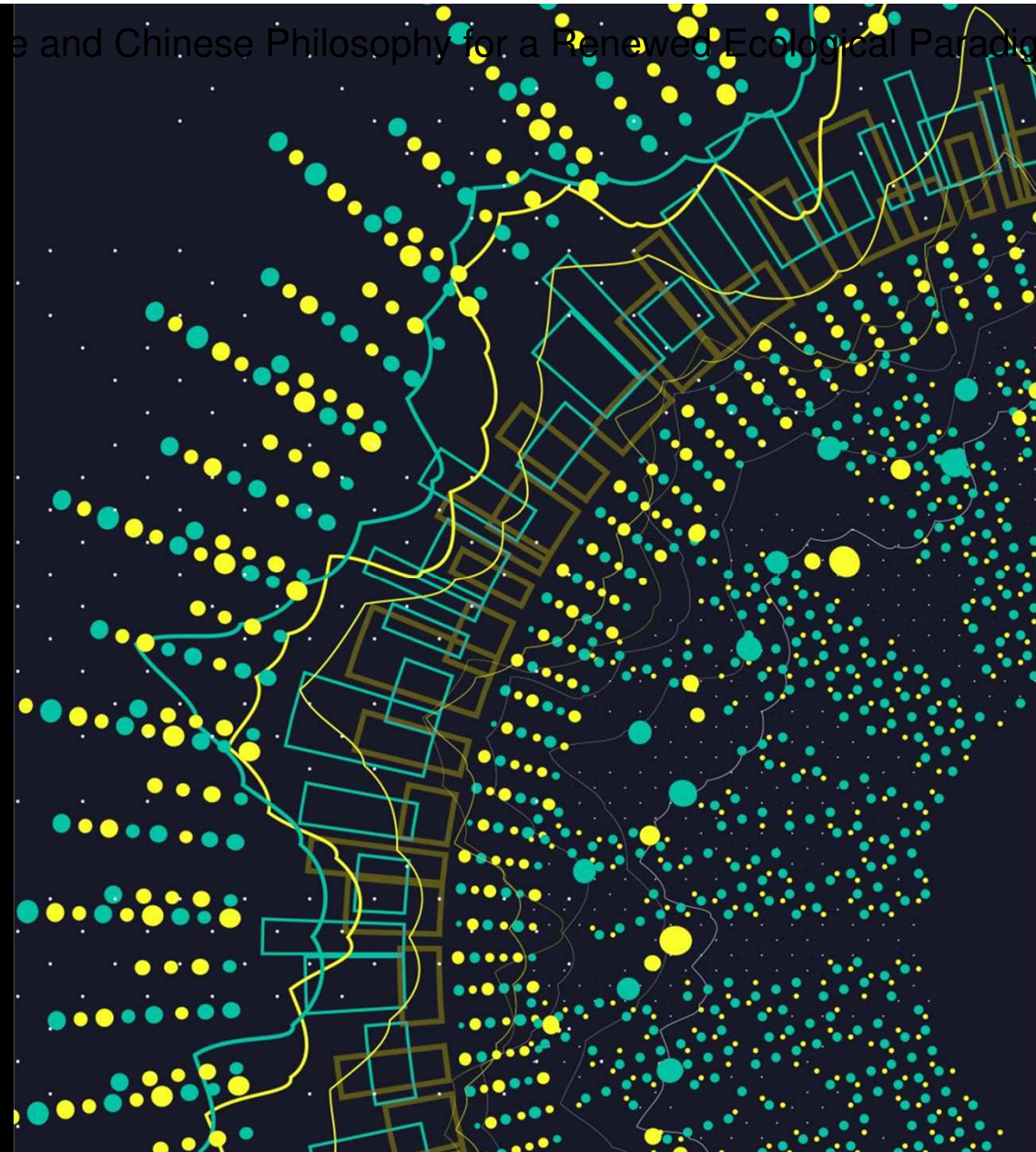


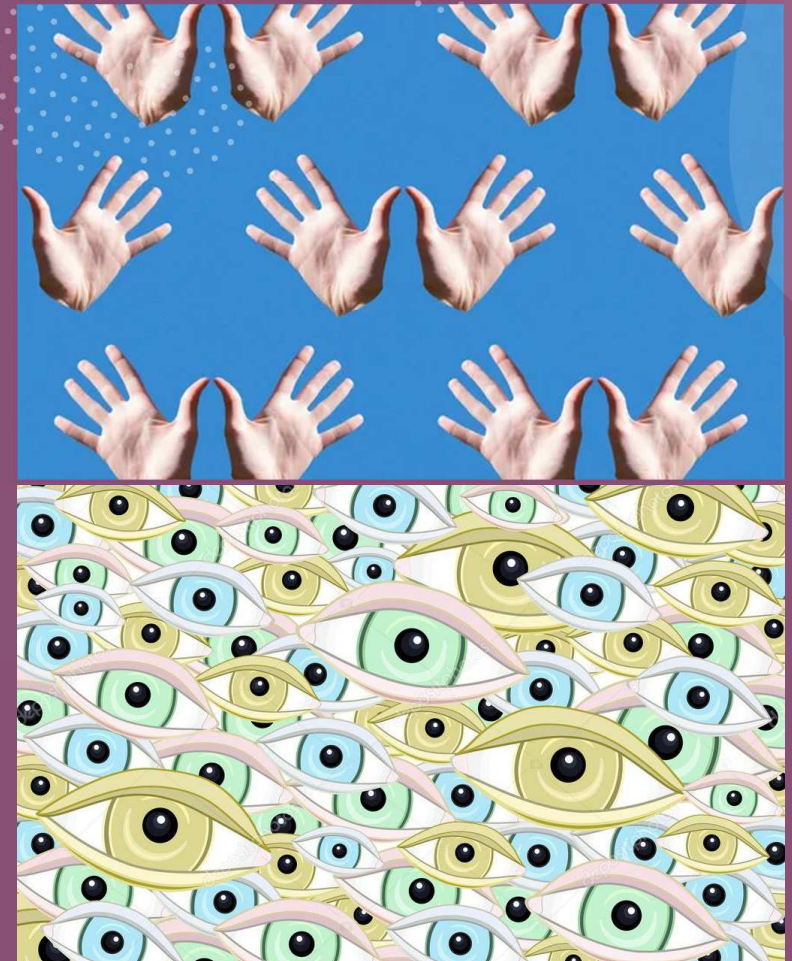
**Between Data and
Meaning: Integrating AI and
Chinese Philosophy for a
Renewed Ecological
Paradigm**

Jana S. Rošker, University of
Ljubljana



Working with a thousand pairs of eyes and a thousand pairs of hands

- AI & Philosophy: anxiety regarding the end of critical thinking;
- However, like any technology, AI's effects depend on how it is used;
- → collaboration between the German Research Center for Artificial Intelligence at Saarland University, and the Department of Asian Studies at the Ljubljana University in Slovenia
- No substitute for philosophical judgment, Rather - a possible extension of scope and precision of scholarly work



Seeing is not identical with understanding, arranging is not identical with interpreting

Patterns, profiles, statistical configuration remain distinct from philosophical reconstruction and creation.

AI expands perceptual and empirical-analytical capacity

Normative-philosophical analysis remains the basic interpretative authority



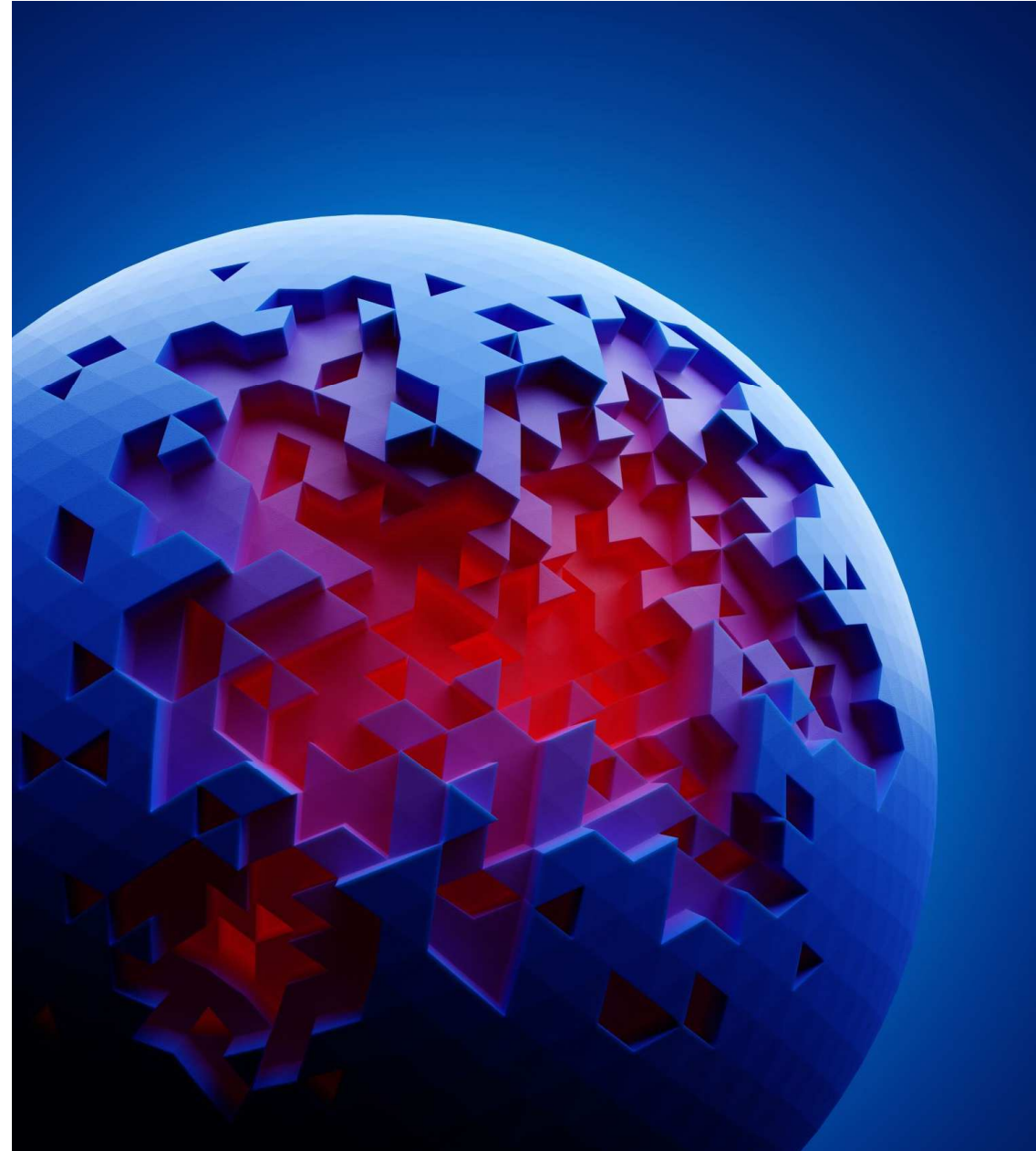
TOPIC AND BASIC METHODOLOGICAL APPROACH

- **TITLE: Relational Embeddedness and Free Subjectivity in Chinese Ecological Thought: An AI-Based Analysis of Classical and Contemporary Sources** (Acronym: REFLECT)
- → integration of AI-based concept analysis with the transcultural philosophical hermeneutic methods, allowing empirical findings and normative interpretation to inform and refine each other
- → goal: overcoming dichotomies between
 1. freedom and relationality
 2. ecology and autonomy
 3. quantitative analysis and philosophical meaning



THE UNDERLYING PROBLEM STRUCTURE

- Contemporary global crises, and ecological disasters in particular, have reached a scale that no single cultural tradition can adequately address and therefore call for the development of joint strategies of transformation. Given their inherently global nature, such crises demand planetary solutions. Regarding their theoretical groundworks, these solutions must be based upon normative and conceptual models capable of addressing contemporary global interdependence and related global environmental problems without being confined to the historical, cultural, or ideological boundaries of prevailing Western discourses.



MOTIVATION: ESTABLISHING AN INCLUSIVE TRANSCULTURAL DIALOGUE



sustained transcultural dialogue



voices from diverse philosophical traditions



constructive syntheses



→ inclusive and effective planetary ecological philosophy

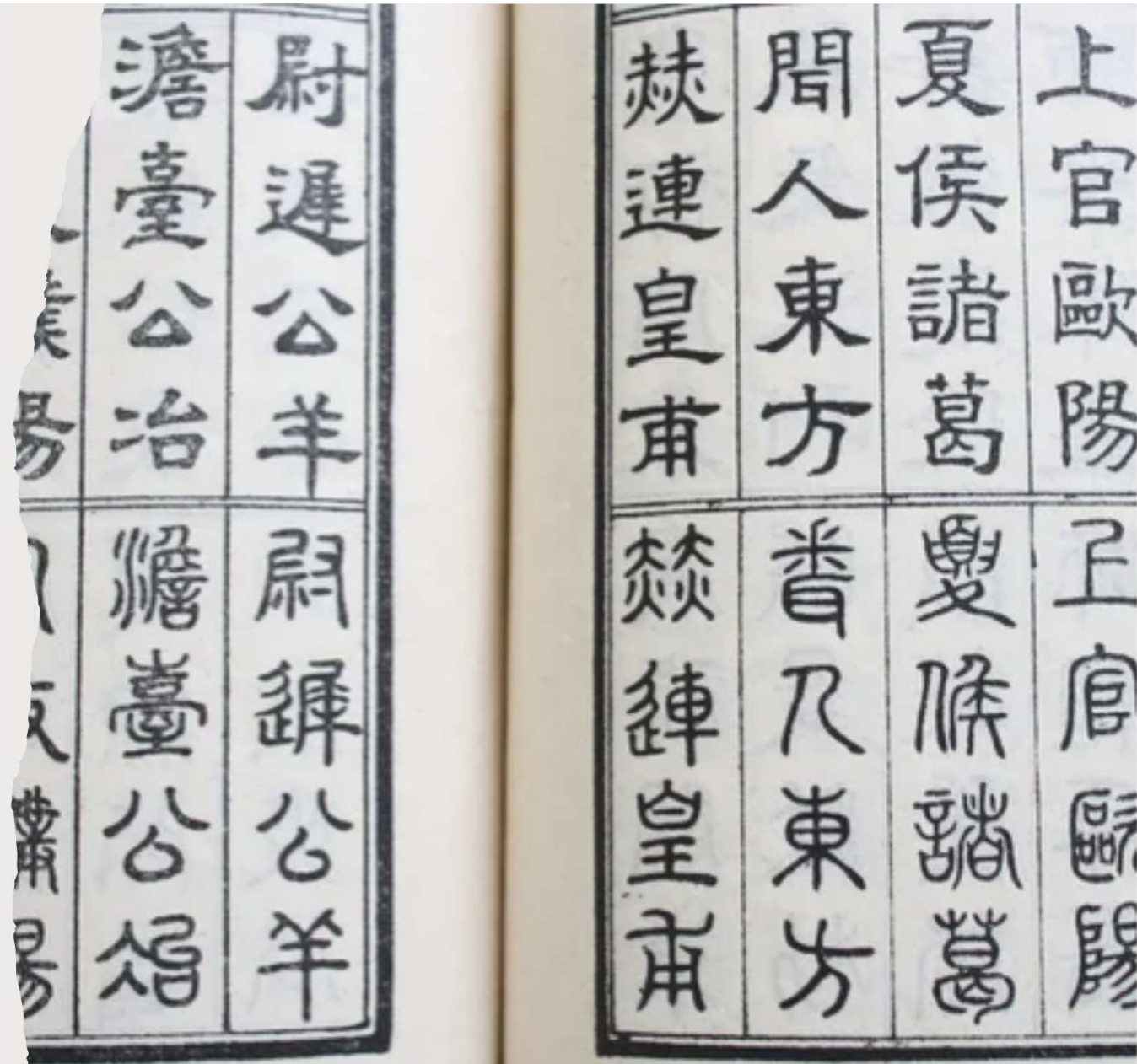
Twofold objective

1. Theoretical Innovation →
new paradigm of
environmental philosophy
2. Advancement in
interdisciplinary methodology
(AI + philosophy)



Why Chinese Philosophy?

- humans, society, and nature = dynamically interrelated
- → problem: selective readings
- → the need for an empirically grounded reconstruction



A model of freedom that does not contradict relational embeddedness and integration of humans and nature, but rather emerges and develops from it.

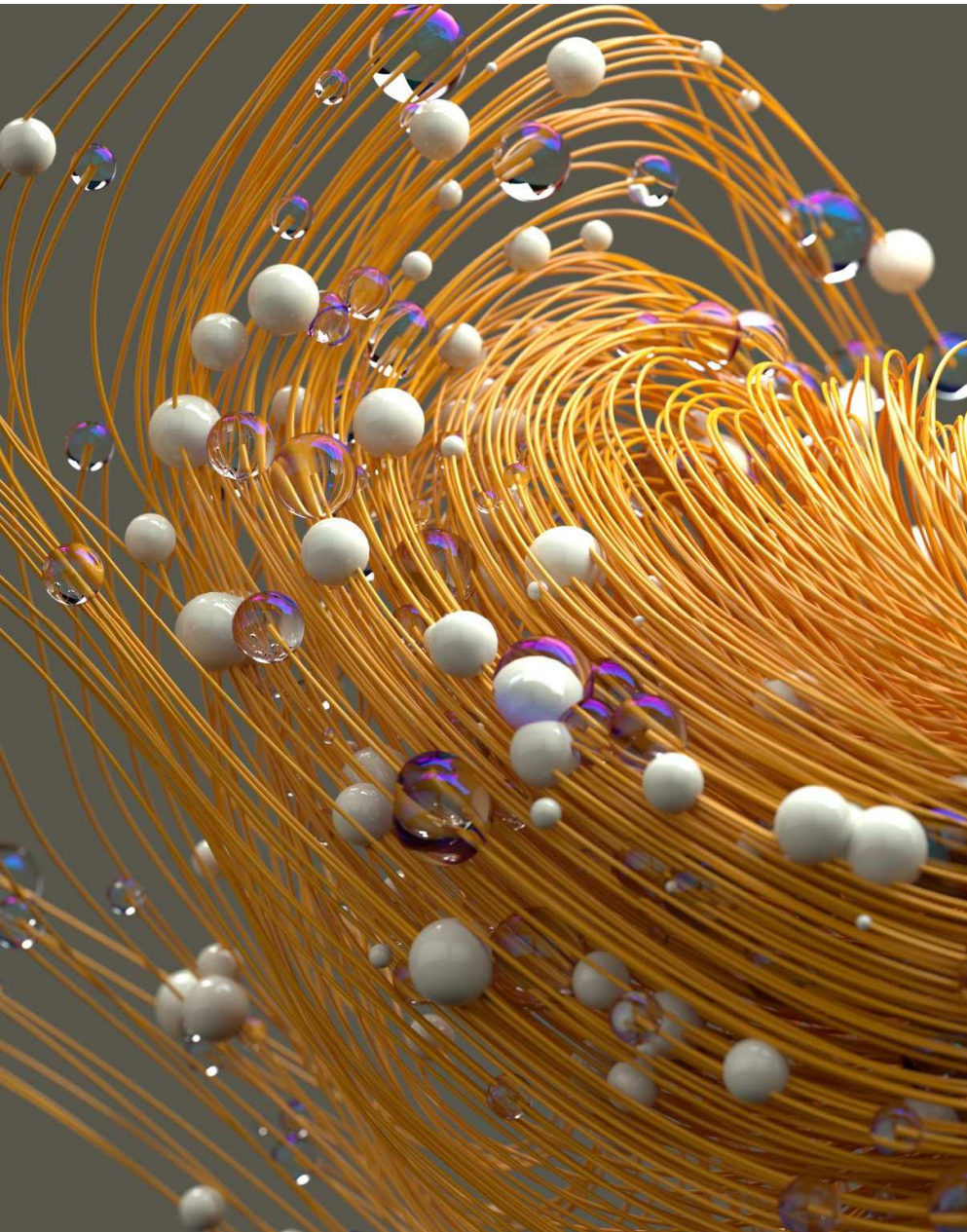
- All claims about relationality or ecological normativity in Chinese thought were hitherto mostly based on selective readings
- We still lack an empirically grounded reconstruction of how such concepts operate across broader discursive and historical contexts. This limitation can be effectively overcome through the application of AI.



Limits of Traditional Methods: close reading vs distant reading

- close reading remains indispensable
- but it is frequently based on limited textual evidence
- → AI can analyse large corpora: it can systematically trace conceptual patterns across large corpora, multiple schools, and long historical periods





LLM and NLP models can overcome these limitations

- In the process of shaping a dominant discourse, philosophical influence is mediated not only through the intellectual traditions of an elite, but also through a wide range of sources external to such canonisation
- Such sources determine which conceptual models of relationality, subjectivity, and nature become socially influential and consequential.
- LLM and NLP models can overcome this limitation

CONCLUSION

- By integrating AI-assisted methods with resources from Chinese philosophy, we wish to detect and explore relational models of existence capable of generating more viable ecological futures.

